

## Easy guide for Dolphin SaySo

**Before you start:** Check that you have plugged in your headphones ready to listen to the Dolphin SaySo software. Check the volume is loud enough for you to hear. Adjust the volume if you need to. Use this button at the bottom right hand side of your screen.

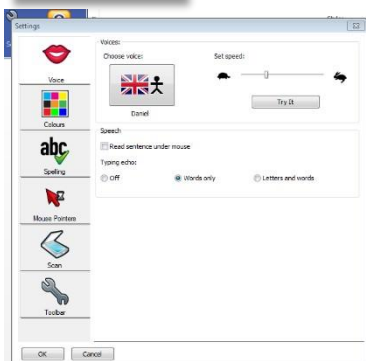
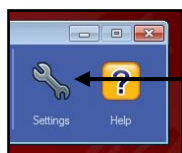
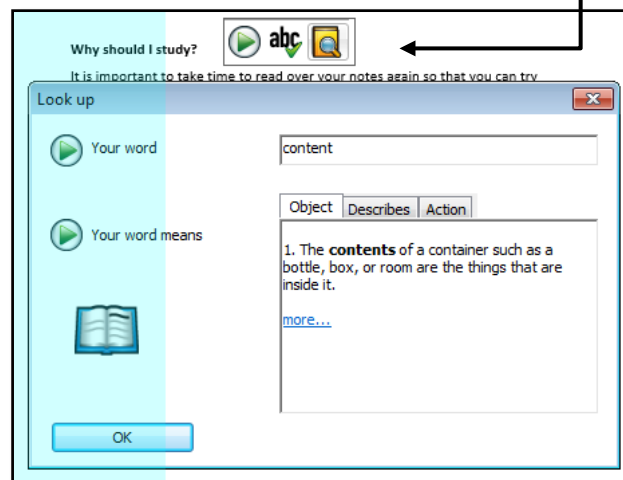
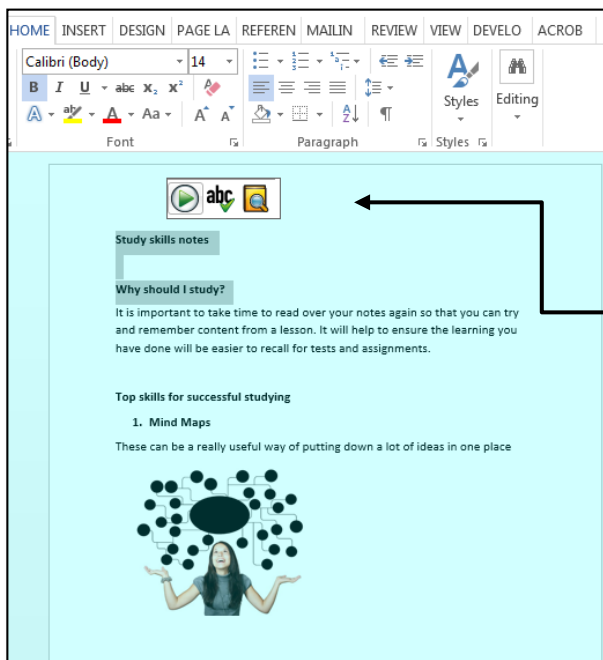


**Step 1:** Click the Dolphin SaySo icon from your computer desktop – this will open the toolbar



**Step 2:** Once you open a document for the Dolphin SaySo to read from, the page will be coloured blue (like the picture on the left).

You should highlight the text you would like the Dolphin SaySo to read out for you. Use the mini toolbar to control the play button, spell checker and meanings of words.



**Step 3:** When you click on the settings button you will have the option to change the voice and speed which the words are read back to you.

**If you need more help using this software:**  
Speak to a member of staff in the NRC library or talk to one of the Education Support staff members on your campus.